



**Glenn Vaillant**  
(407) 989-1806



## **THE SANTA MARIA at VERANDA BAY**

THE CRAFTSMAN

**4 Bedrooms • 3.5 Bathrooms • 3-Car Garage • 2,912 ft<sup>2</sup> Living Area • 3,928 ft<sup>2</sup> Under Roof**

The Santa Maria is a 2,912-square-foot design perfect for families, with four bedrooms, three and a half baths, and a three-car garage. The grand living room with 12-foot ceilings opens to a deluxe kitchen and dining area, flowing out to a covered lanai ideal for entertaining. A private master suite on the main floor offers a peaceful retreat, while upstairs, three more bedrooms and a game room create a haven for family fun. Customizable options—like a guest suite, extended lanai, and deluxe bath features—ensure this home can be tailored perfectly to your lifestyle.

**Glenn Vaillant**  
Century 21 Next Level - 1700  
(407) 989-1806  
gvaillant@c21nextlevel.com

\* Renderings may vary from actual home. Please see disclaimer for more details.

# THE SANTA MARIA

4 Bedrooms • 3.5 Bathrooms • 3-Car Garage

**Veranda Bay** Available In  
Flagler Beach, FL Veranda Bay 50 OYL

**Living Area:** 2,912 ft<sup>2</sup> **Under Roof:** 3,928 ft<sup>2</sup>

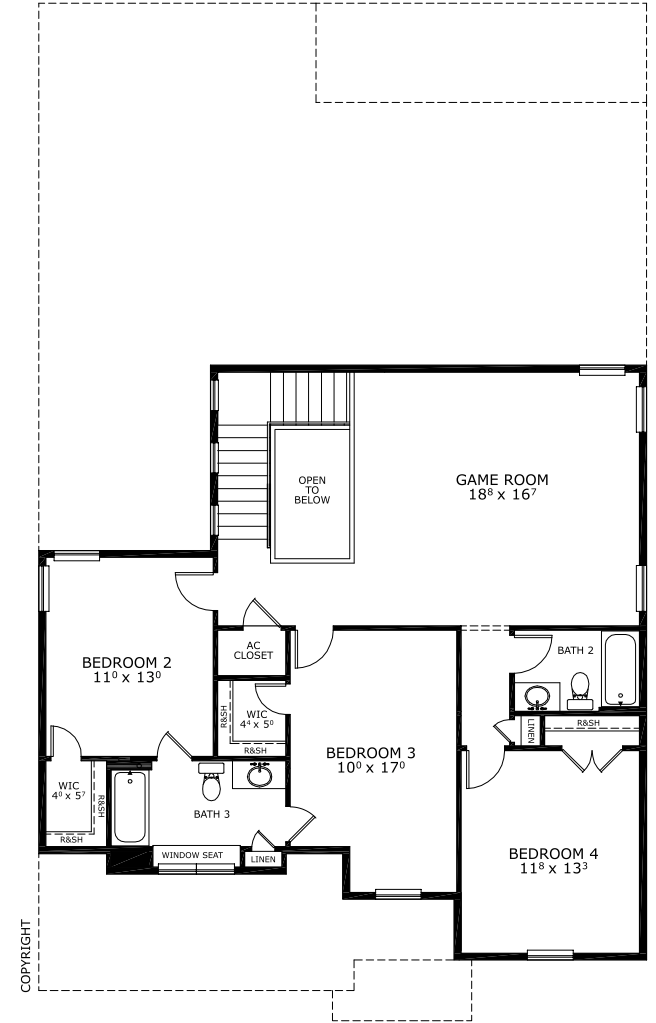
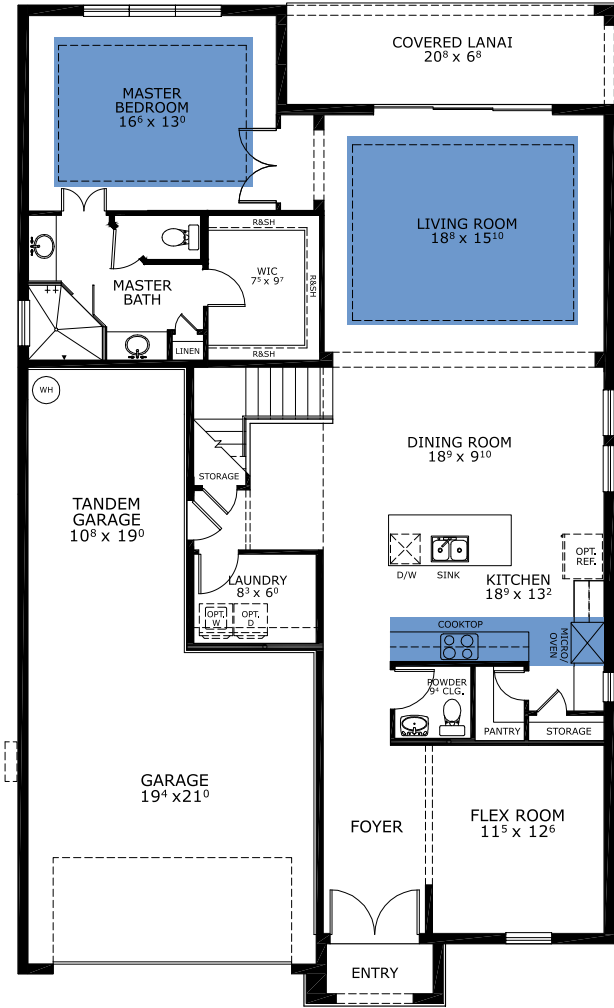
THE COASTAL - TILE



THE FARMHOUSE - TILE



## FIRST-SECOND FLOOR



©1994-2026 ICI Homes™ is a registered trademark whose divisions operate under CBC1267313, CBC1262114, CBC1262120, CBC1264300, CBC1265743, CRC1333091, and CBC1257263. Features may be plan specific and vary. Please consult a Sales Associate for specific feature information. All new ICI Homes come with a HBW 2-10 warranty. Certain elevations may have additional fees. Prices may not include lot premiums, upgrades, and options. Inventory home completion date may vary. All prices subject to change without notice. All plans are property of ICI Homes and cannot be copied or used without permission. Prices, promotions, incentives, features, options, amenities, floor plans, elevations, site maps, designs, materials, and dimensions are for illustrative purposes only and subject to change without notice. Plans should not be relied upon as representation express or implied of final sizes, locations, features or dimensions. Square footage and dimensions are estimated and may vary from description. All HERS ratings and savings are calculated by a third party energy rating service. Actual savings will depend on a number of factors, including but not limited to daily activities, home maintenance practices, household size, use of appliances, lighting and internal climate control systems, lot orientation, and surrounding climate and weather conditions. Created on 04/05/2026: \_\_\_\_\_ Garage Orientation R / L: \_\_\_\_\_

